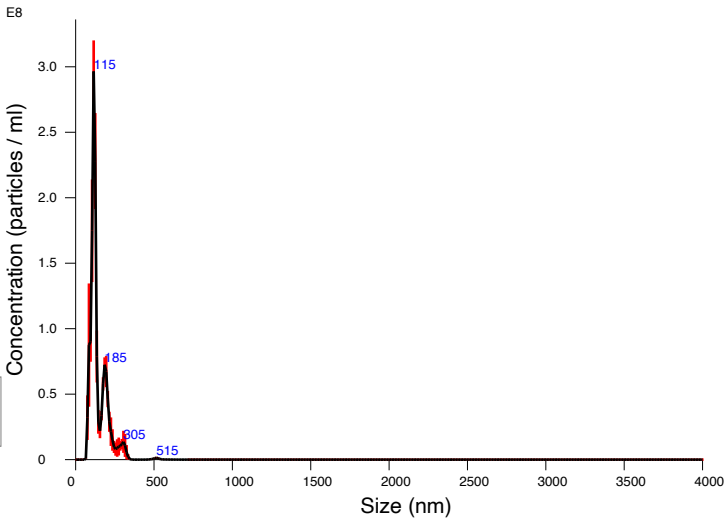


FTLA Concentration / Size graph for Experiment:
Capture 2022-09-23 12-41-44



Averaged FTLA Concentration / Size for Experiment:
Capture 2022-09-23 12-41-44
Error bars indicate + / -1 standard error of the mean

Included Files

Capture 2022-09-23 12-42-14
Capture 2022-09-23 12-42-48
Capture 2022-09-23 12-43-15

Details

NTA Version: NTA 3.4 Build 3.4.4
Script Used: SOP Standard Measurement 04-43-57PM 02~
Time Captured: 12:41:44 23/09/2022
Operator: Ruth
Pre-treatment:
Sample Name: hom. = 5m (1)
Diluent:
Remarks:

Capture Settings

Camera Type: sCMOS
Laser Type: Blue405
Camera Level: 12
Slider Shutter: 1200
Slider Gain: 146
FPS: 18.7
Number of Frames: 374
Temperature: 22.0 °C
Viscosity: (Water) 1.0 cP
Dilution factor: Dilution not recorded

Analysis Settings

Detect Threshold: 12
Blur Size: Auto
Max Jump Distance: Auto: 9.4 - 10.3 pix

Results

Stats: Merged Data

Mean: 144.4 nm
Mode: 116.4 nm
SD: 58.9 nm
D10: 93.1 nm
D50: 122.6 nm
D90: 215.5 nm

Stats: Mean +/- Standard Error

Mean: 144.1 +/- 4.0 nm
Mode: 116.2 +/- 1.5 nm
SD: 58.3 +/- 3.8 nm
D10: 94.9 +/- 5.7 nm
D50: 122.2 +/- 2.0 nm
D90: 214.4 +/- 2.5 nm
Concentration: 1.48e+09 +/- 7.13e+07 particles/ml
80.9 +/- 3.9 particles/frame
87.7 +/- 6.2 centres/frame